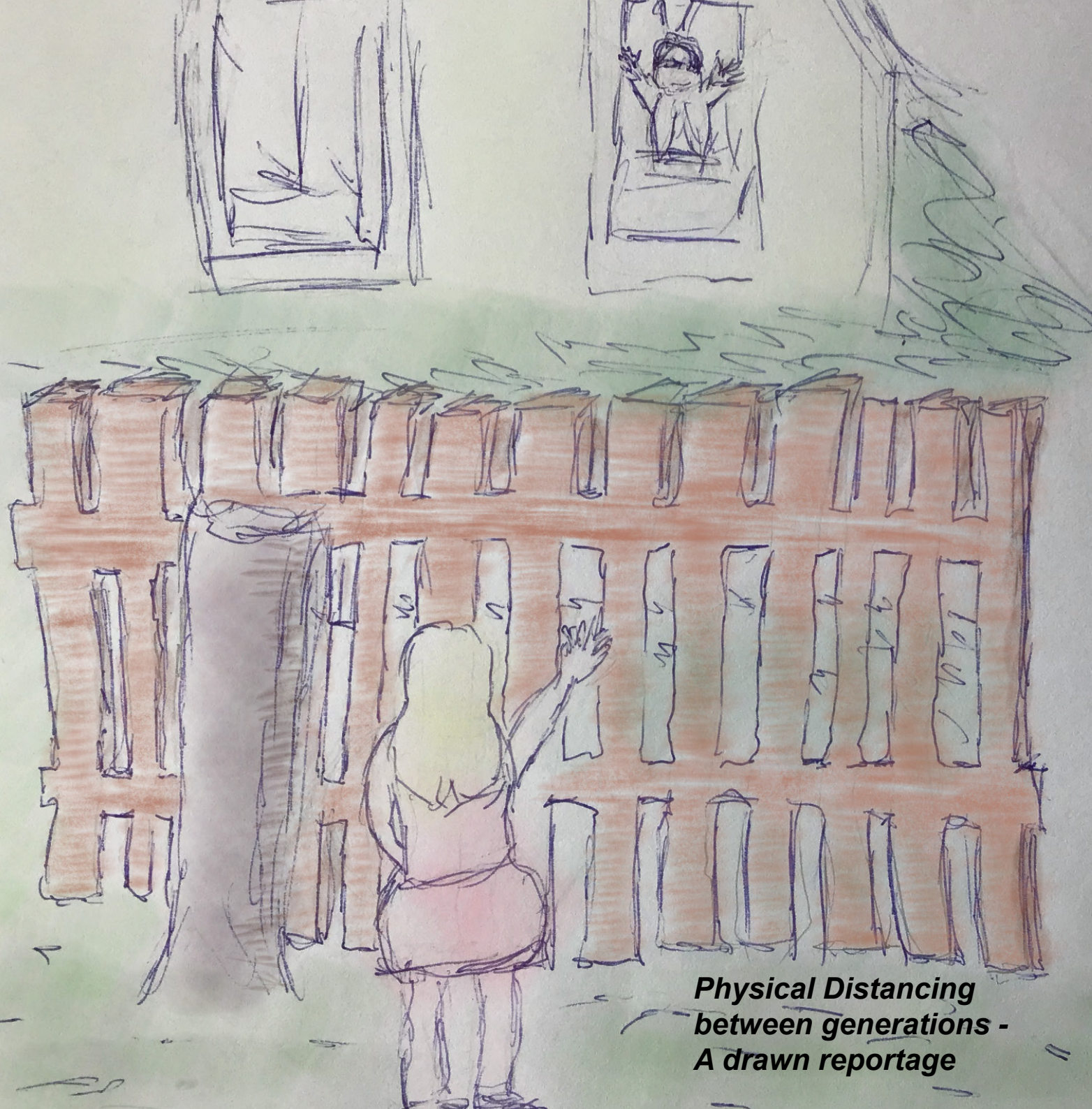
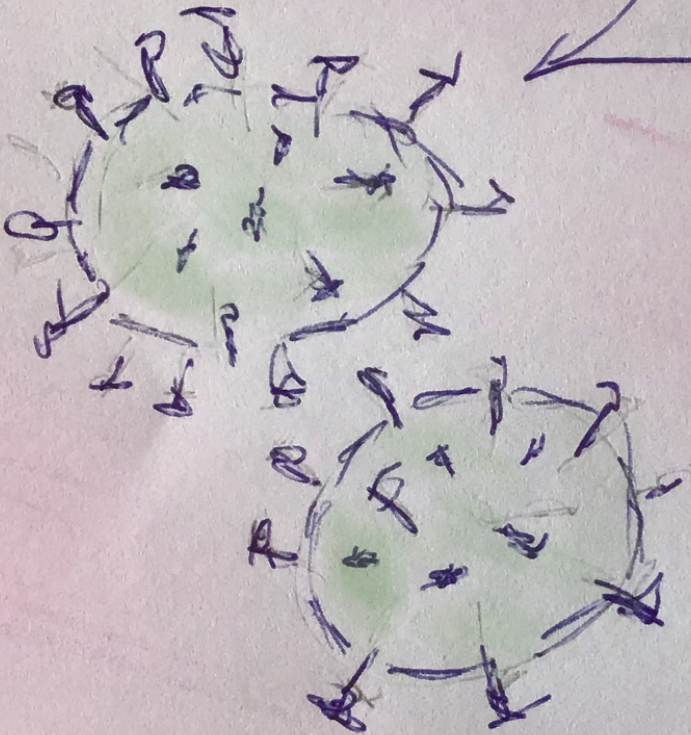


Arbër S.
Bern, Switzerland
June 2020



**Physical Distancing
between generations -
A drawn reportage**

Divided
by a
fence



We're
coming

Yes,
we're coming

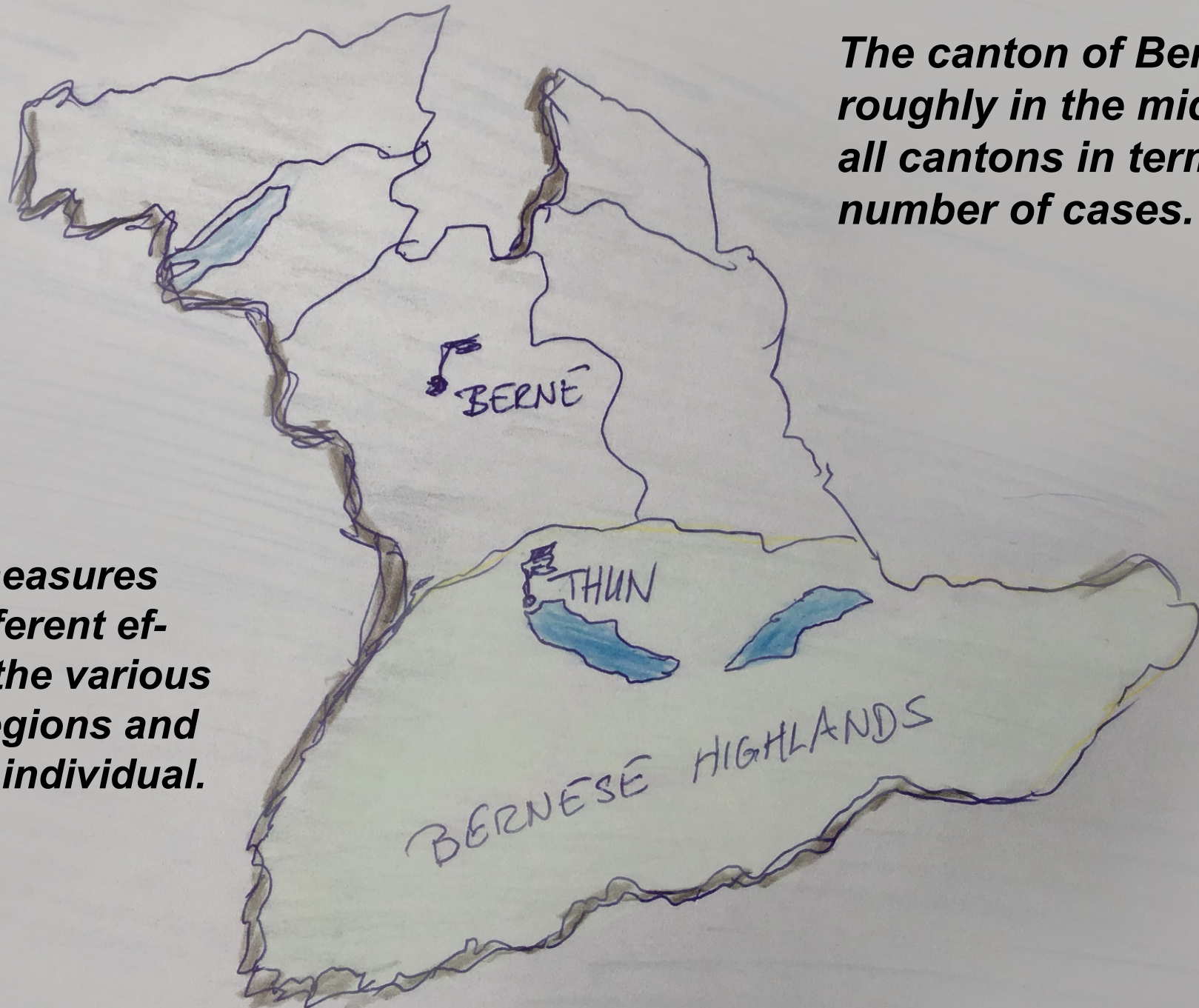
Since the outbreak in Wuhan, China, the coronavirus has also spread to Europe, including Switzerland.

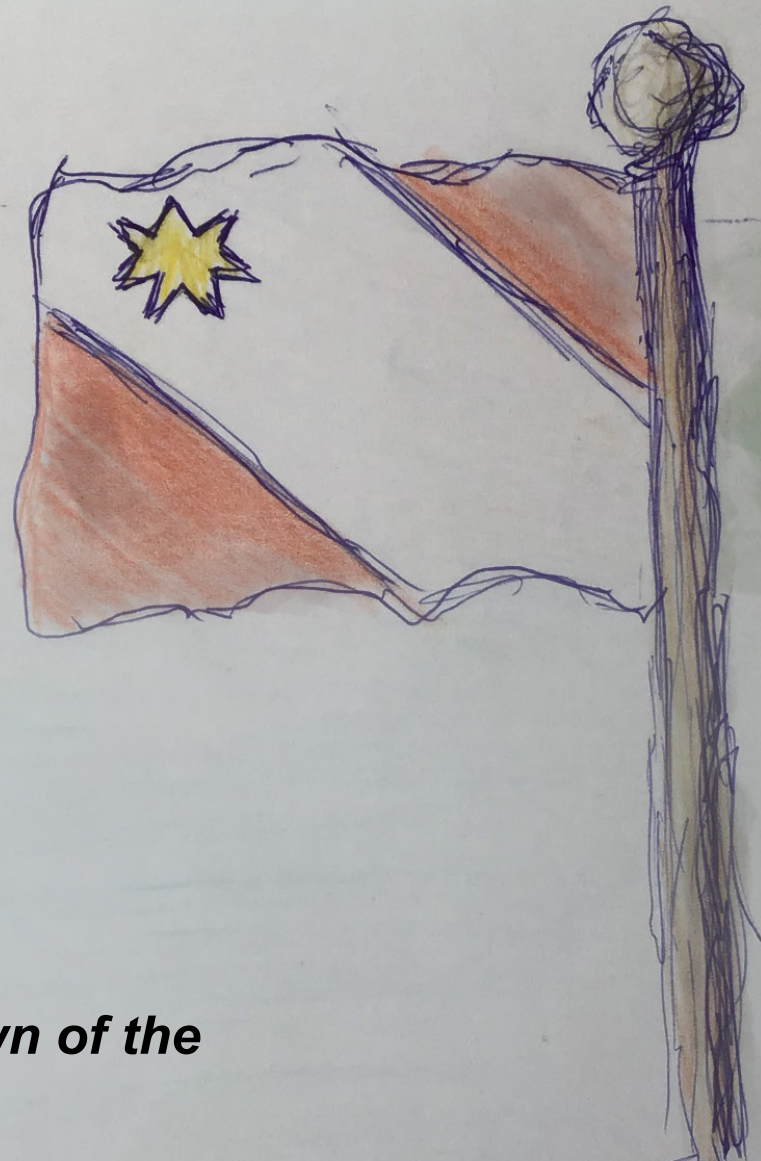
The Federal Council has therefore declared the extraordinary situation in the country. Social life has been shut down until further notice in order to take action against the coronavirus.



The canton of Bern is roughly in the middle of all cantons in terms of the number of cases.

These measures have different effects in the various Swiss regions and on each individual.

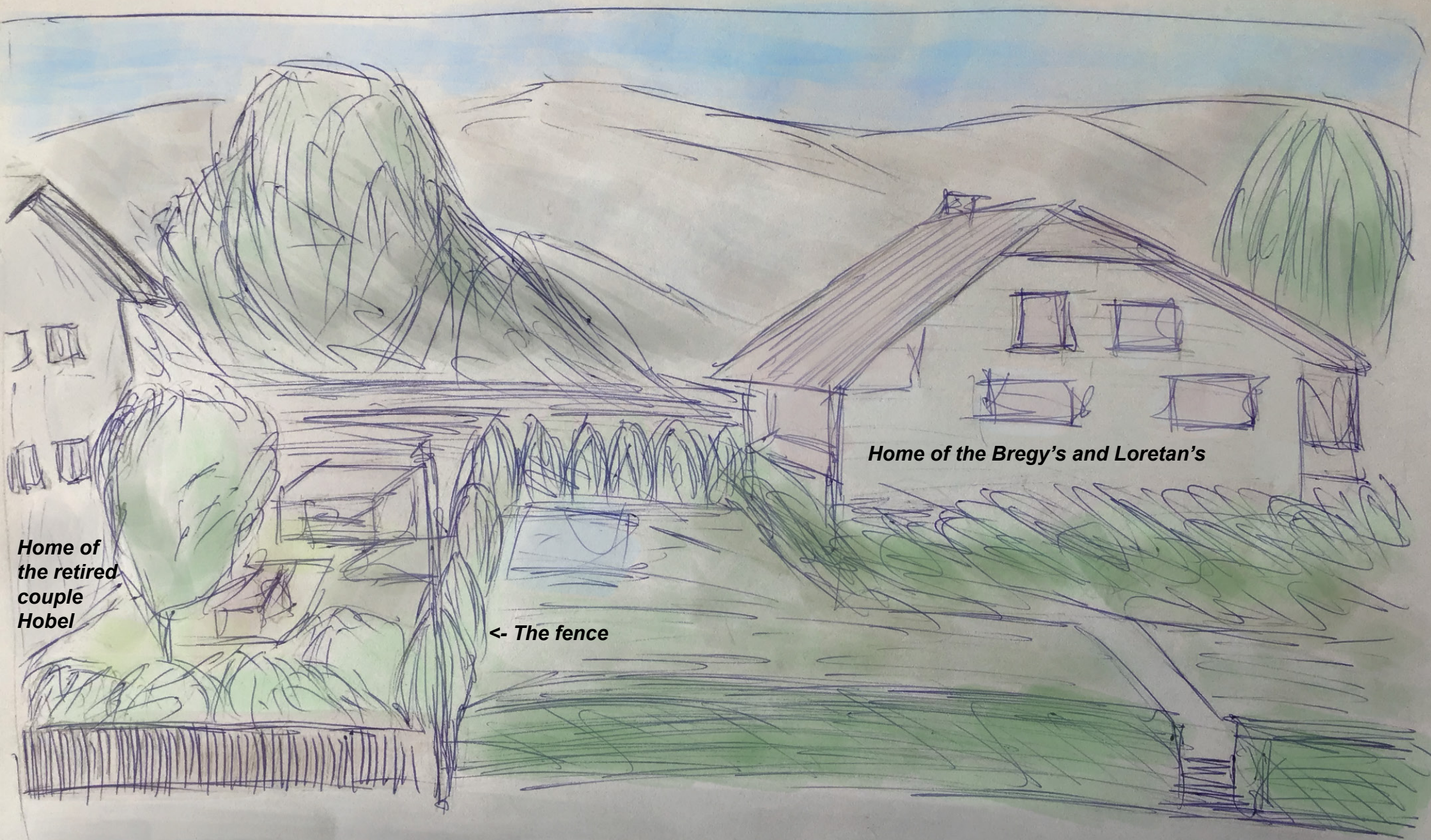




Thun is the capital town of the Bernese Highlands.



Thun has one of the lower rates in the whole canton. Nevertheless, the same measures apply here as nationwide.



**Home of
the retired
couple
Hobel**

Home of the Bregy's and Loretan's

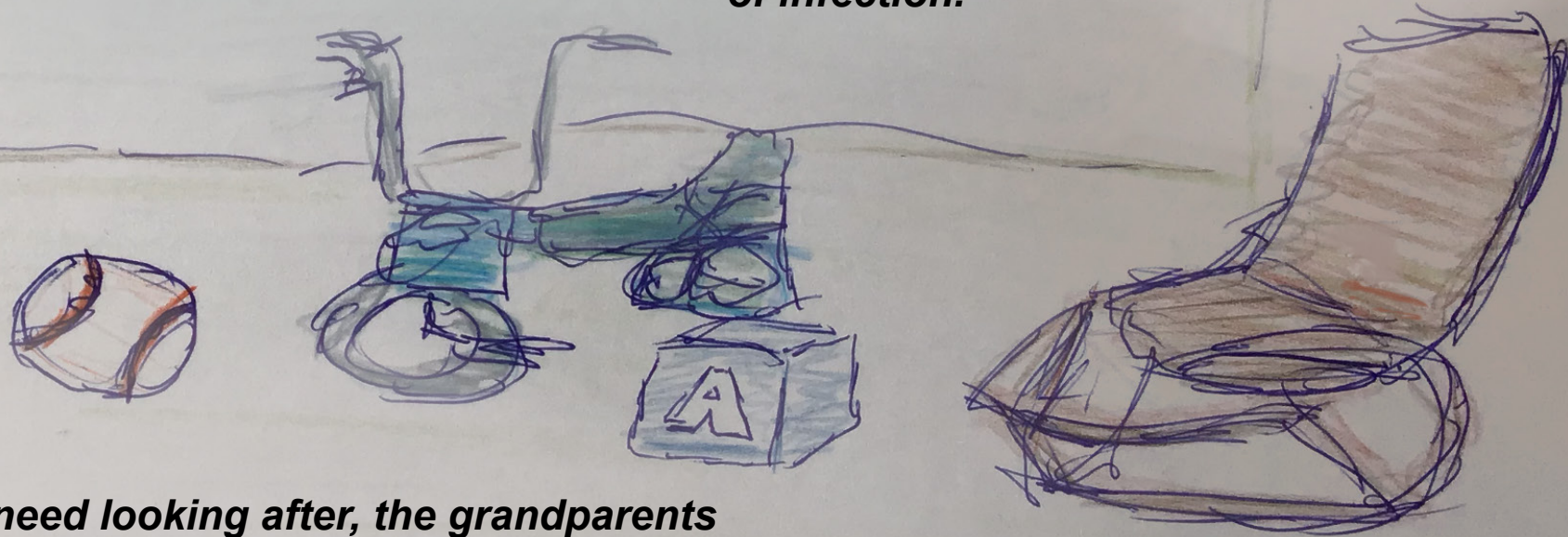
← The fence

The retired couple Hobel are the parents of Anja Bregy and Martina Loretan. They live next to their daughters.

The two families Bregy and Loretan each live in a semi-detached house of a large house in the city of Thun. The families are related to each other. Both families have 2 children.

The extraordinary situation surrounding the coronavirus is currently keeping the Bregy's and Loretan's, such as the couple Hobel firmly under control.

However, due to the ongoing corona crisis, many things have changed: Grandparents, who belong to the risk group, must not get too close to their own grandchildren because of the risk of infection.

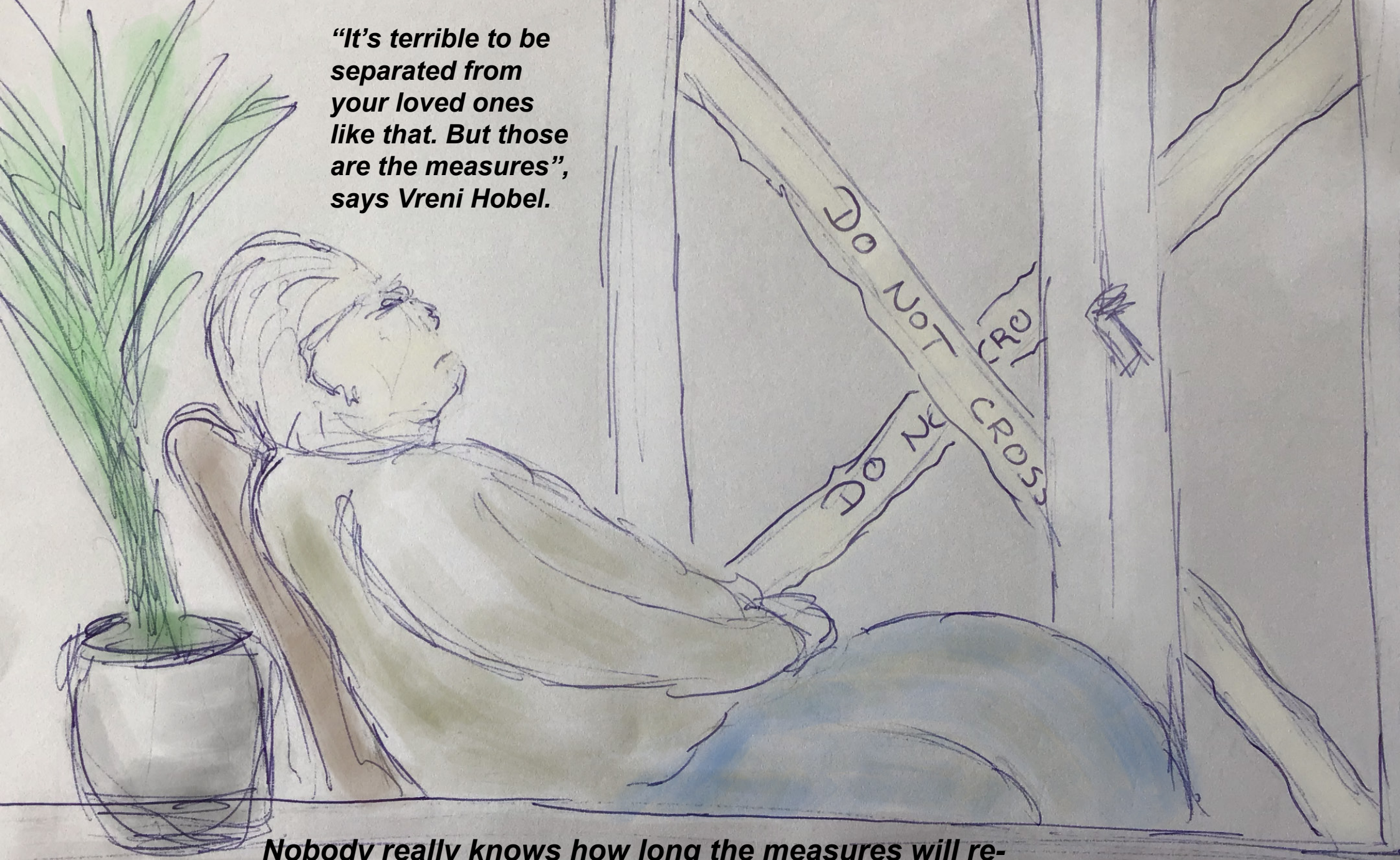


Usually, if the children need looking after, the grandparents Hobel worry about their grandchildren.

The common garden fence serves as a border. Until the loosening up in summer, nobody really knew how long these measures would apply. This brings the individual generations into certain conflicts.

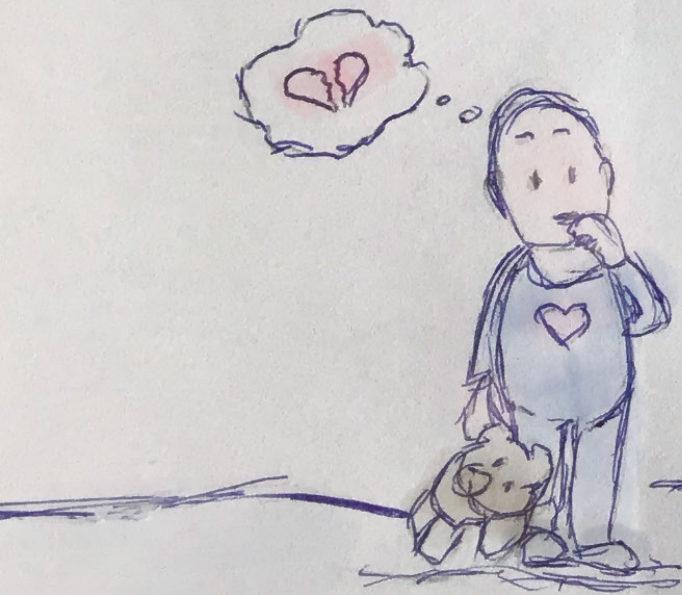


"It's terrible to be separated from your loved ones like that. But those are the measures", says Vreni Hobel.

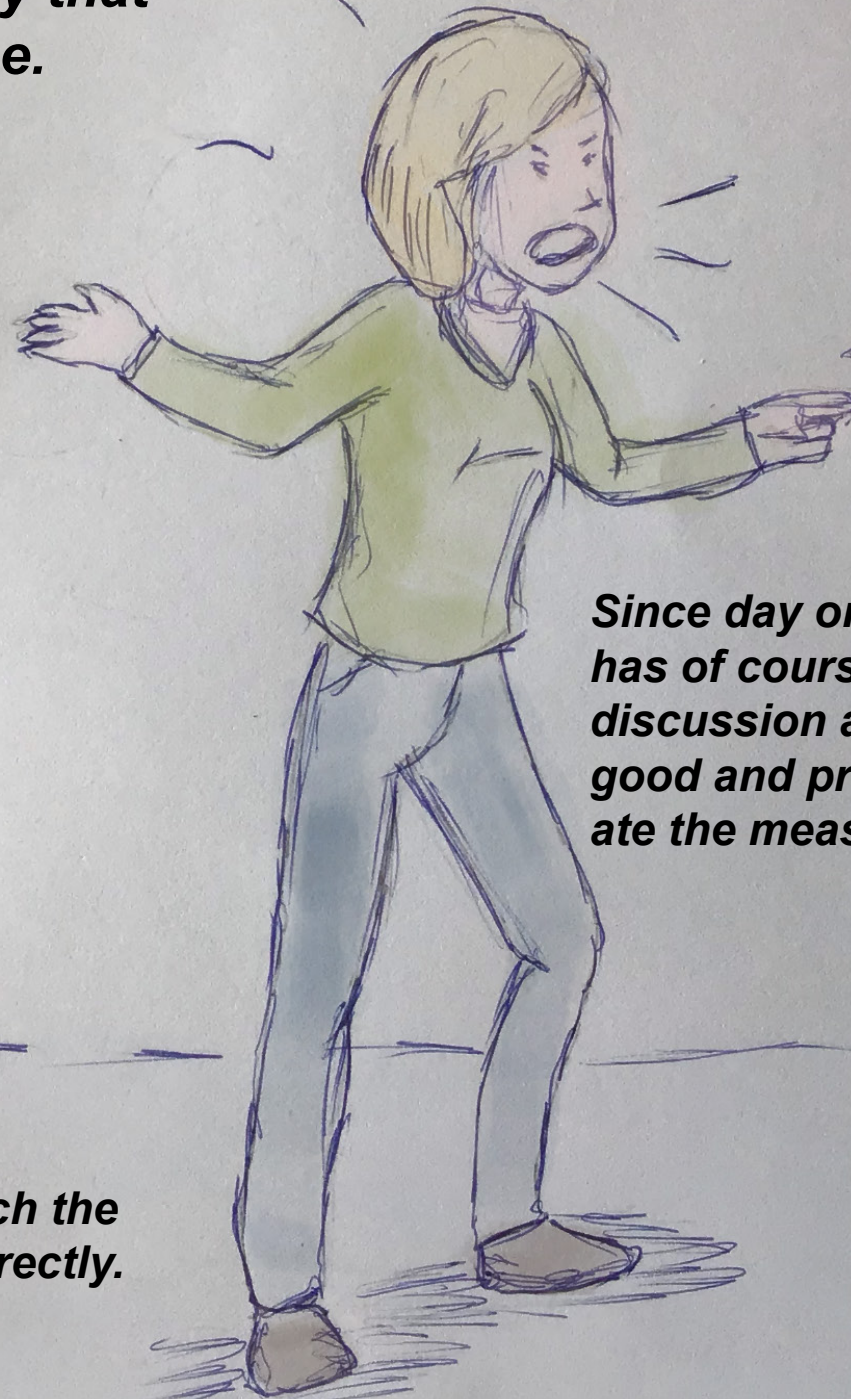


Nobody really knows how long the measures will remain in force and what happens afterwards. In many respects, the measures represent a massive break in social life.

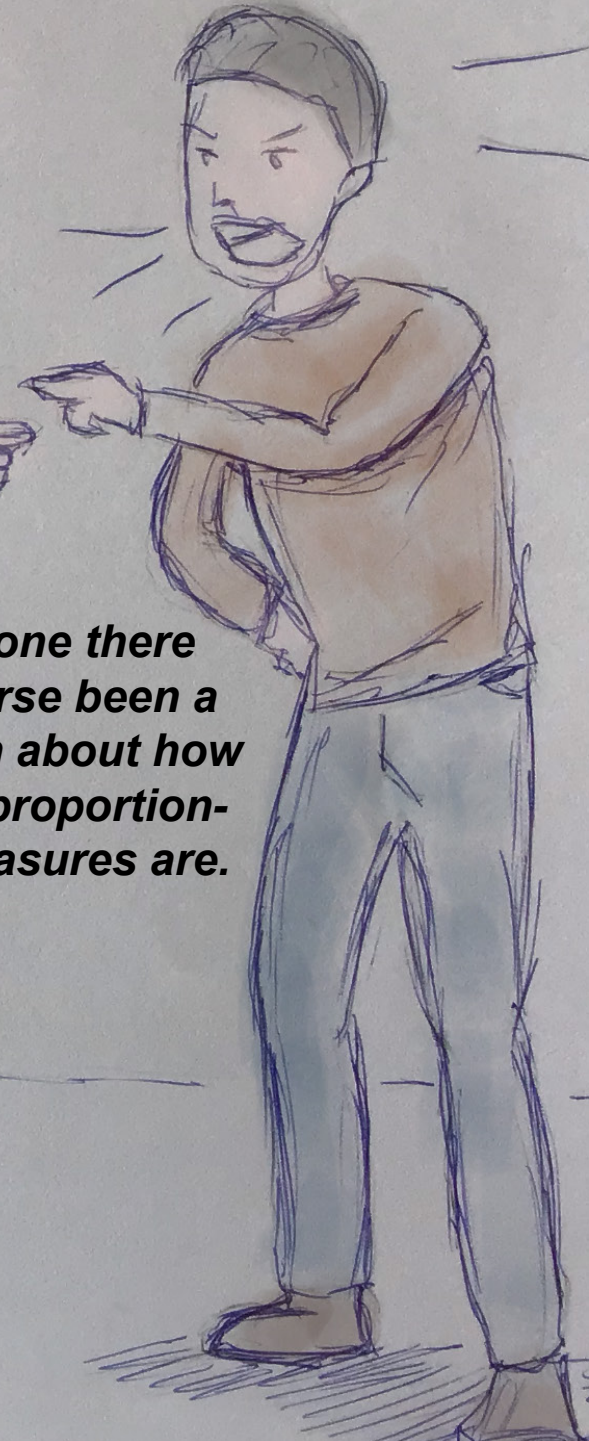
The whole situation is, of course, also a possibility that many tensions may arise.



This has negative effects, which the children notice directly or indirectly.



Since day one there has of course been a discussion about how good and proportionate the measures are.



Two and a half months and three stages later, the restrictions are somewhat relaxed again and an initial sense of normality returns.



But there is still caution - the population is still being urged to comply with the protective measures so that there is no second wave and no more lockdowns.

***But hope should not be
given up in overcoming
such obstacles.***

