

[cheselech] [cheselech]

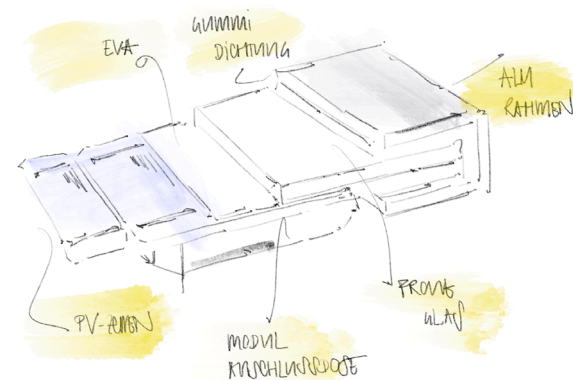
... the place where you realize that you are all the same!
Already from far away you can recognize [cheselech] due to its metal scaffolding which is almost completely overgrown with various hanging plants (Fig.1). Solar panels are located on top of the construction and store enough solar power to fulfill the energy needs of [cheselech] (Fig.2). In the inner area, artsy container buildings, good vibes and comfy seatings are awaiting visitors. [cheselech] lives and grows with the needs and imaginations from its multicultural community. For that reason, the containers are not permanently

Jessica Auer

fixed to the ground and can be moved easily into new combinations. The particular buildings are multifunctional and can be used for example as a bar, a stage or a tiny movie theater (Fig.3&4). Moreover, some of them serve as a storage of rainwater or as a safe and warm place for the plants during cold winter-times. Along with the aim of community building, [cheselech] seeks to be almost entirely self-sustaining. To achieve this goal a lot of space inwardly is reserved for beets, pots or hanging basket where a wide variety of herbs and vegetables are growing and be given away for free to the food trucks (Fig.5).



[Fig.1]



[Fig.2]



[Fig.5]



[Fig.4]

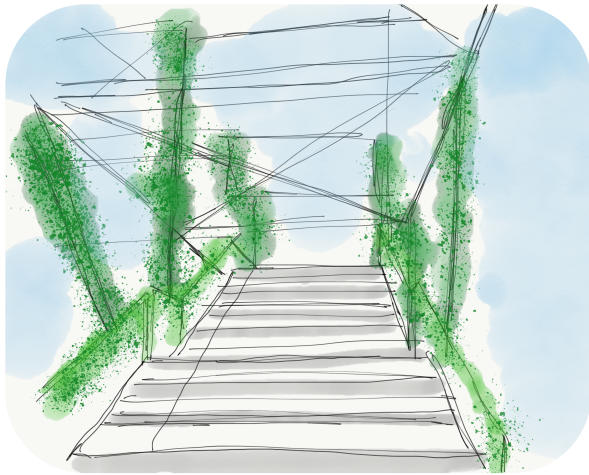


[Fig.3]

Kulturgerüst

by Lynn Aeschlimann

My idea is to build a scaffold with wooden platforms which are connected by stairs. The platforms are going to be used for a raised bed garden. A scaffold is cheap to build and one would still be able to walk beneath.

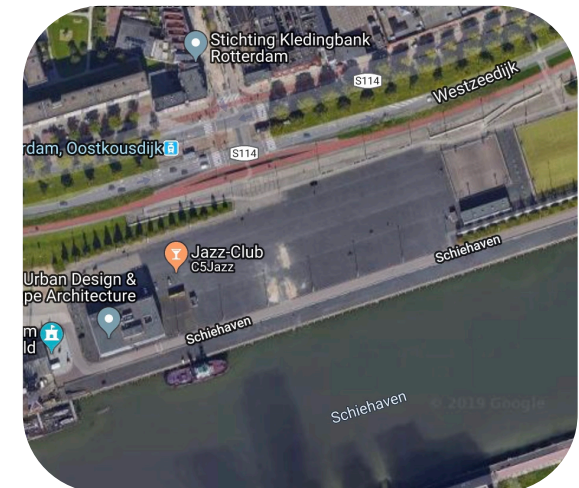
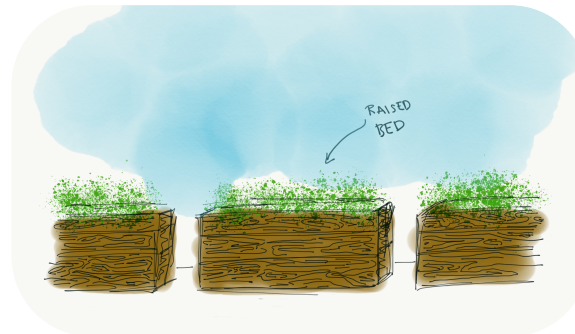
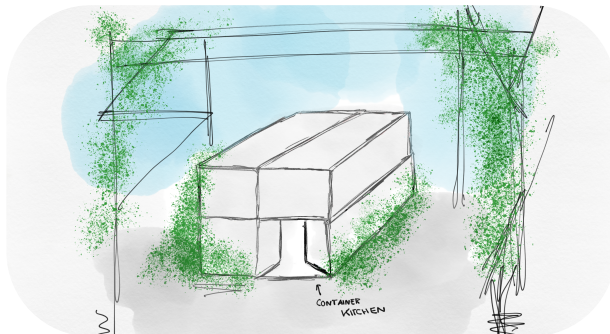
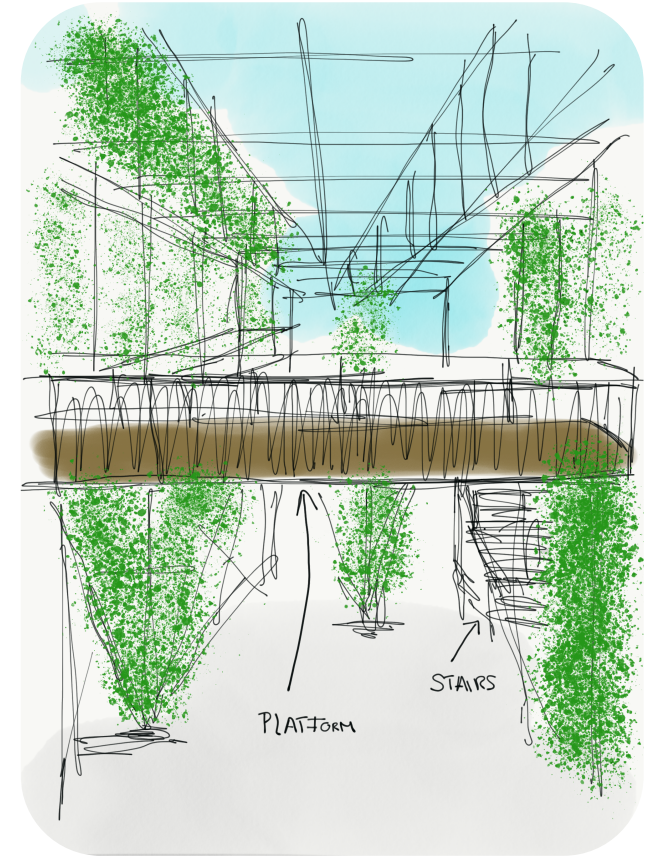
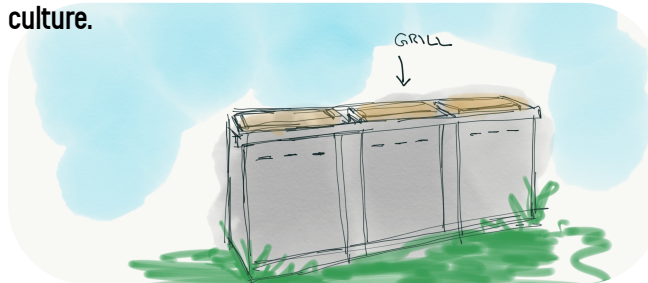


The students of Rotterdam told me, that one of the issues the city has to deal with, is to connect the multicultural.



The idea of this area is to create a place where people of different backgrounds and cultures can connect. They will have the option to garden, cook, eat and talk together.

Corina Mühle and I wanted to augment the area with grillstations and a kitchen inside a container. Every sunday there will be a "day of culture", the theme will change everytime and be picked up from a different culture.



Diversity Tandem

My idea is about connecting two characteristics of Rotterdam to promote diversity among the inhabitants in the city.

Rotterdam unites many different cultures from all around the world. Around 50 percent of Rotterdam's inhabitants are not born Dutch. My project is about combining this fact with the most convenient means of transport in Rotterdam: the bike.

My idea is to establish an app-based tandem rental in Rotterdam, which combines the features of a dating App like Tinder and a classic bike rental app.

In a first step, customers type in the location they'd like to go to and secondly they specify why they are going there (sightseeing, meeting new people, a date etc.). The app locates an available tandem in the surrounding area and for people who go in the same direction with the same purpose.

The plan is that the tandem rental is for free if the two cyclists don't have the same religion or nationality. This discount expires after five rides.

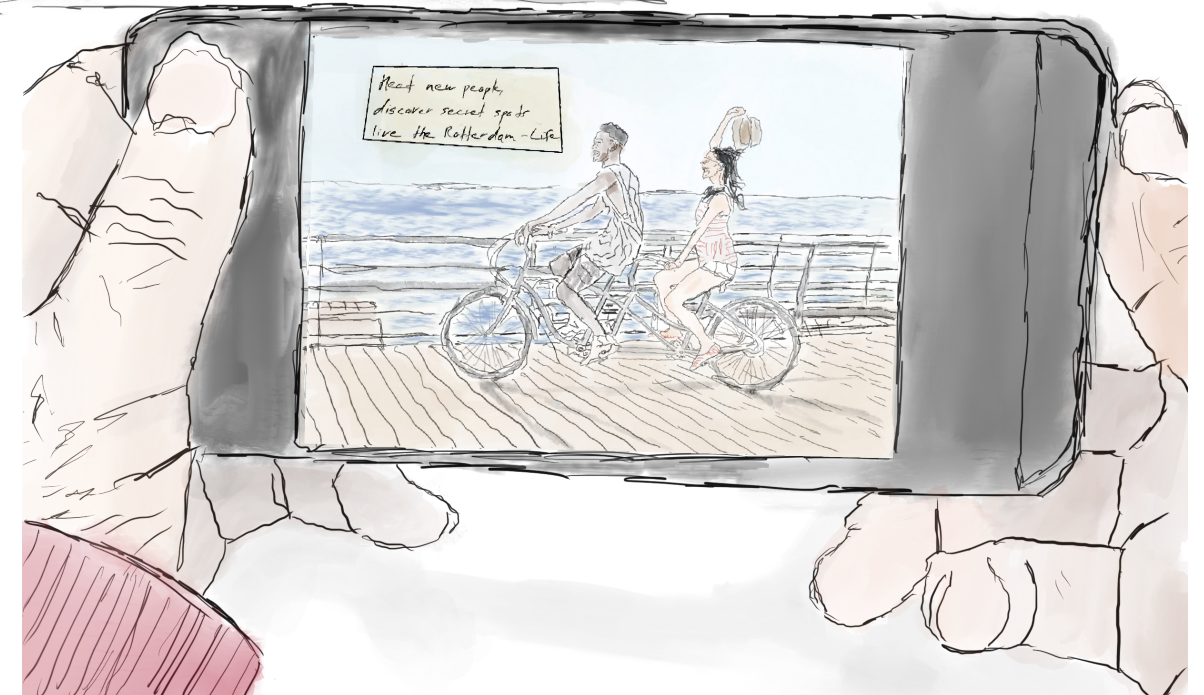
This app can be interesting for tourists as well as inhabitants of Rotterdam to meet new people, get in touch with different cultures and explore secret spots in the city.



The easiest way to discover Rotterdam is by bike. Many Bike lanes bring you through the city safely.



Diversity: ~50% of Rotterdam's inhabitants are not born Dutch



My Idea is ...

...to bring back bees and other insects to urban areas. While walking through the streets of Rotterdam, it occurred to me, that there were actually more plants and trees than in some other cities I've been to. Still most of them are just green plants, there are not so many flowers or other places where bees like to go.

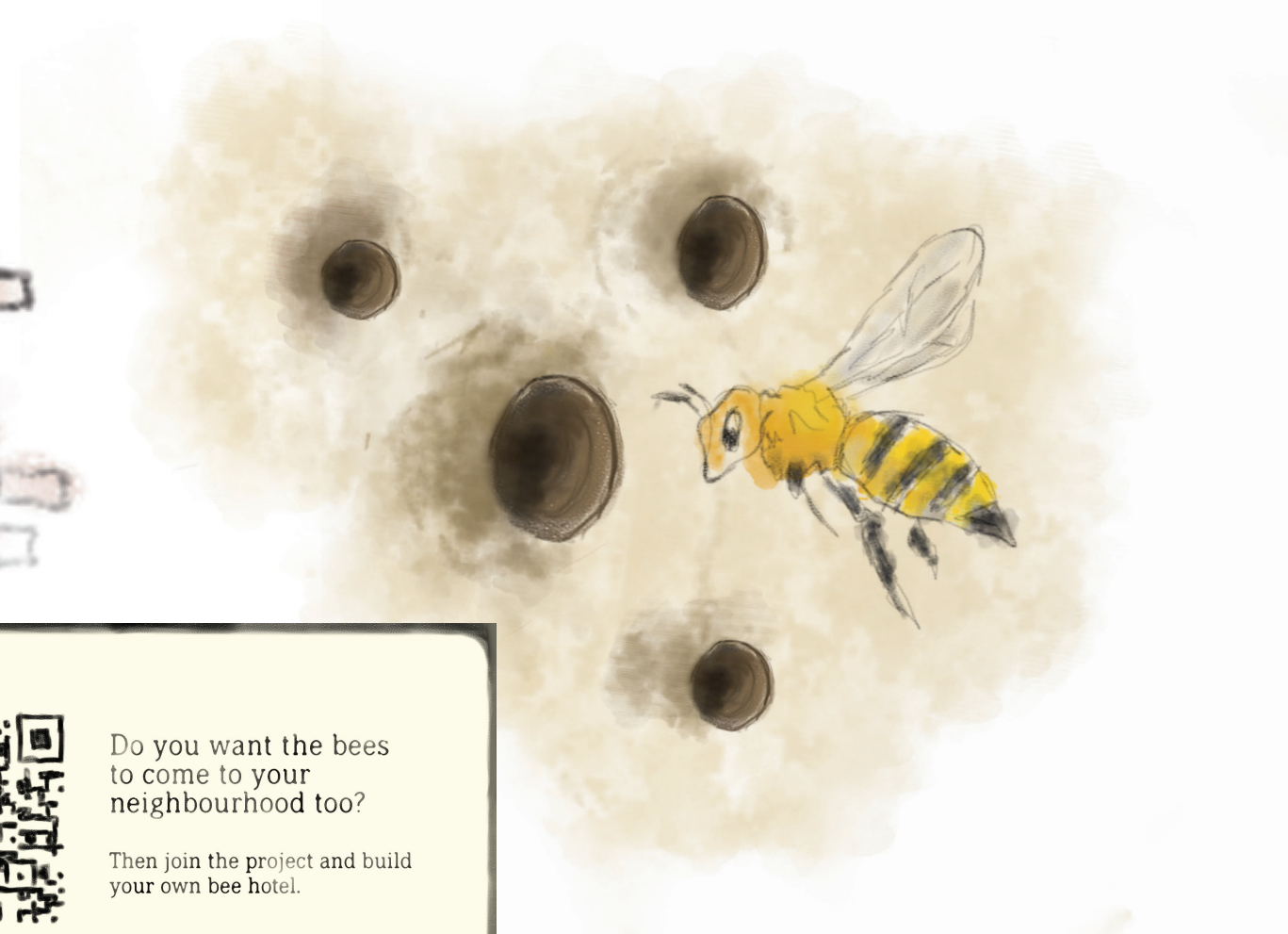
My idea is to build flower boxes that are piled up above each other. When it rains the water will be able to drip through the bottom of the boxes all the way to the lowest one, where the water is stored. When it is dry this water can be used to water the plants. On the side of the boxes there will be another piece of wood attached with holes drilled in it, so the bees can nest in there.

There will be a label attached with a QR-code on it. If people that are passing by happen to be interested in the project, they can scan the code and find out more about it on a website. Anyone who would like to build a bee hotel in their neighbourhood can join the project. On the website people can download a plan and instructions for building a bee hotel on their own. There are also tips for planting flowers and a list of plants that attract bees.



Do you want the bees to come to your neighbourhood too?

Then join the project and build your own bee hotel.



Name Lukas Alpiger

Tiny big house

Since the Dutch have the largest population density in the EU, it is therefore difficult to find an apartment. That's why cheap modular homes are needed. Rotterdam is perfect for a try as it is a port city.

The residential complexes consist of ship containers, a harbor crane and a green roof. The following sections explain the individual elements in more detail.

Rooftop

On the roof is a large platform with raised garden beds and greenery. Also a place for common barbecue and get-together is available. Because you only have the apartment on 28m², an outdoor space is especially important. The garden should encourage the cultivation of vegetables.

Wastewater drainage

Solar panel

Fresh water

Dockable bridge

Containerflats

Every apartment is build inside of an 40ft shipping container. These are modular. They should work as a single and in a residential complex. Each container is supplied with power, which is generated by a solar panel. Fresh water and wastewater drainage are located at the back of the container. They are connected with an adapter to the containers above and below. At the front of the container is the entrance door, as well as a large glass front. Each of the containers receives a bridge, which is connected to the left and right containers. This guarantees the access to all flats.

Hafenkran

The crane forms the heart of the residential complex. The crane places every apartment into complex. If someone wants to move, the container can be loaded on a truck without much effort. The bridge of each container leads to a staircase on the side of the crane. This way, access to the various floors can be guaranteed.



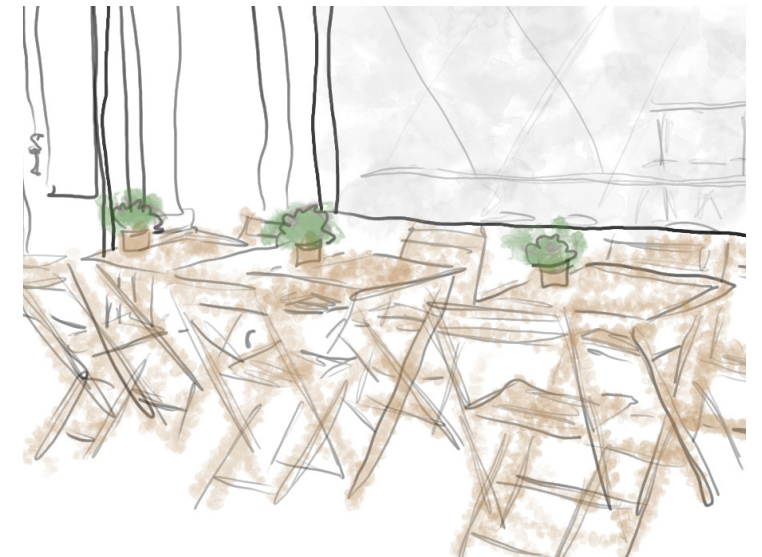
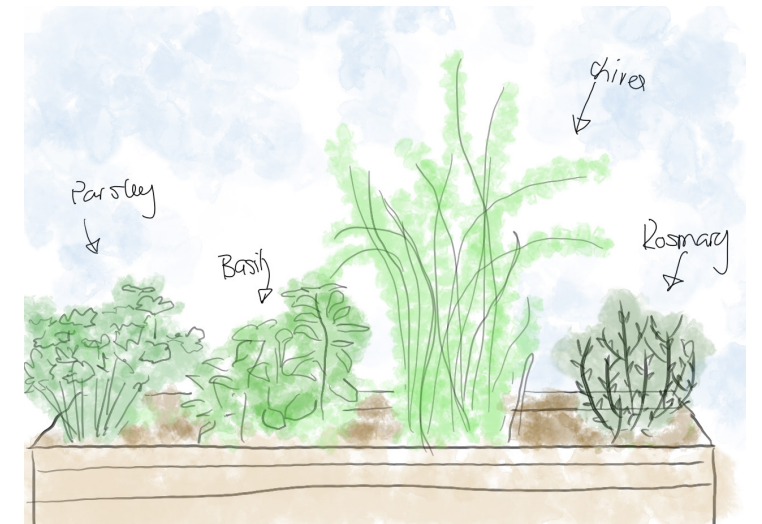
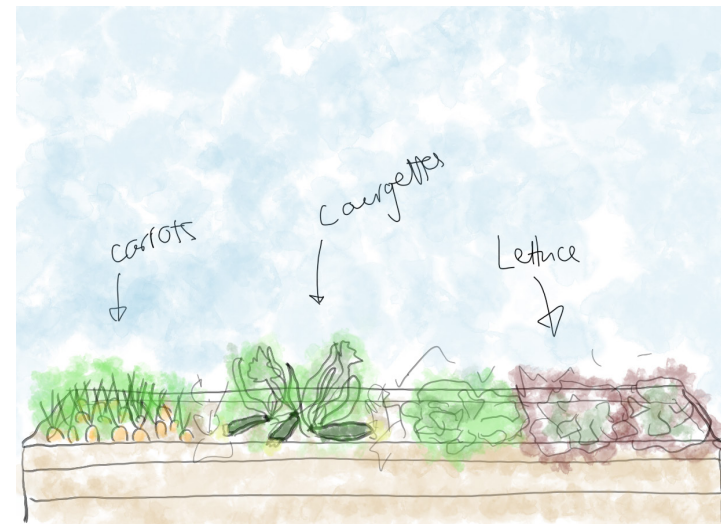
Hannah Ambass

plants instead of cars

After doing a lot of research about urban gardening, I realized that one major problem when it comes to this topic is pollution. It's problematic if we eat polluted food. So what kind of solution could there be for this problem? Of course, no more cars in the city. Or at least in certain areas.

My vision for not only Rotterdam but also other cities all around the world are carfree centers. Green oases full of beautiful flowers, trees, healthy veggies and herbs where people can meet up and relax instead of stress about traffic and bad air. One place to start off with my idea that came to my mind is the famous Witte de Withstraat in Rotterdam. I picture raised beds full of greens with seats and benches next to them instead of parking spots and cars.

But who is going to care of the plants? Well, everyone who wants to. Over an app students, residents, cafés or unemployed people could rent spaces in the beds and communicate with each other to make sure all the food lands in the belly and not in the bin.



car less - plant more!

Name Sandro Andres

Under-cover in Rotterdam

My idea is to make the city more liveable and sustainable by greening it.

Through interviews and analysis, I have found that Rotterdam has two basic problems. On the one hand, there is a high amount of rainfall which leads to floods but logically also against the residents being together. On the other hand, it can get very hot in summer and raise the temperature in the city.

My idea now is to build a kind of wild vine pergola over the streets, which will protect pedestrians from the rain and still provide shade at hot temperatures.

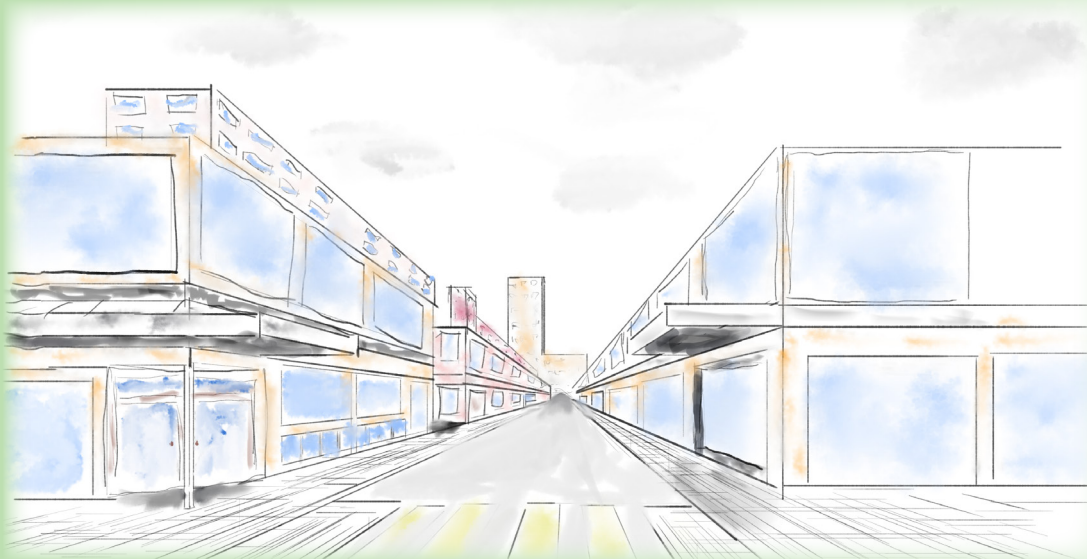
As a comparison I have drawn a before/after picture of a suitable pedestrian passage in the city centre which could be used for this project.

The same passage was drawn from above for a better idea. Here you can also see how the greenery on the roofs could be extended and how for example a second meadow like the one by Luchtsingel could please the people of the city.

How the whole thing could look in detail with sun, rain and in winter with snow, I also tried to illustrate more exactly with sketches.

As a further positive side effect of this project, the cityscape is additionally beautified by the greenery and even the air is cleaned a bit.

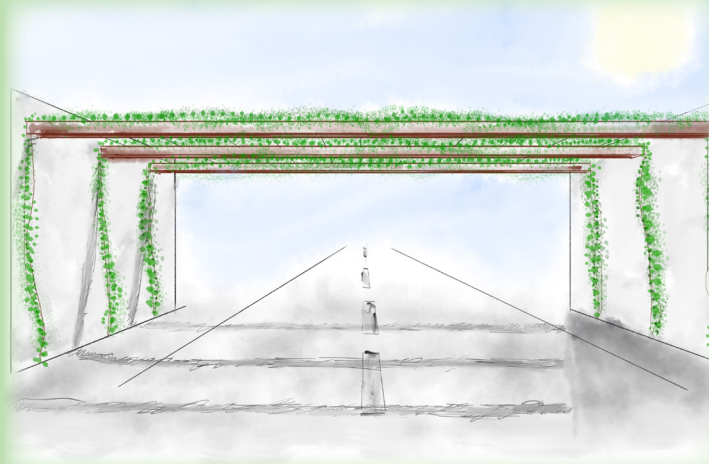
Before



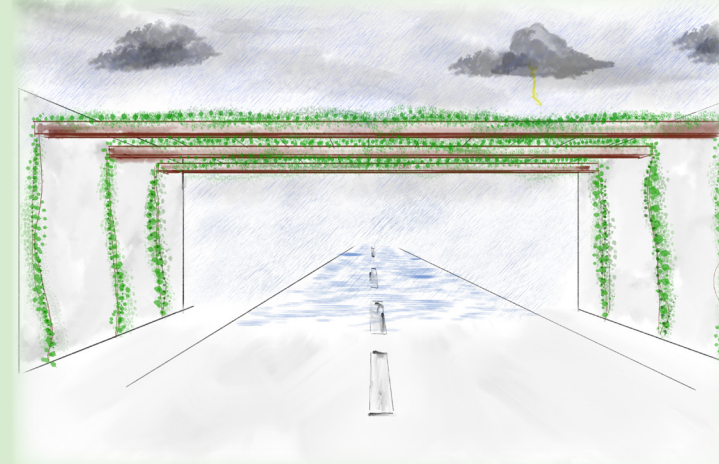
After



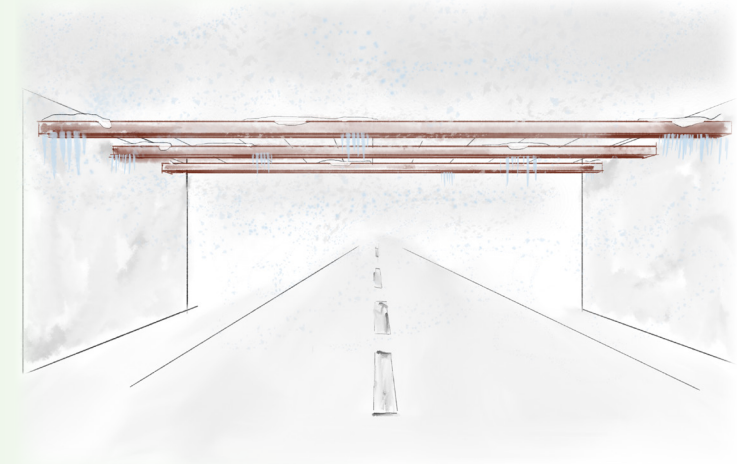
Sun



Rain



Winter



Before



After

